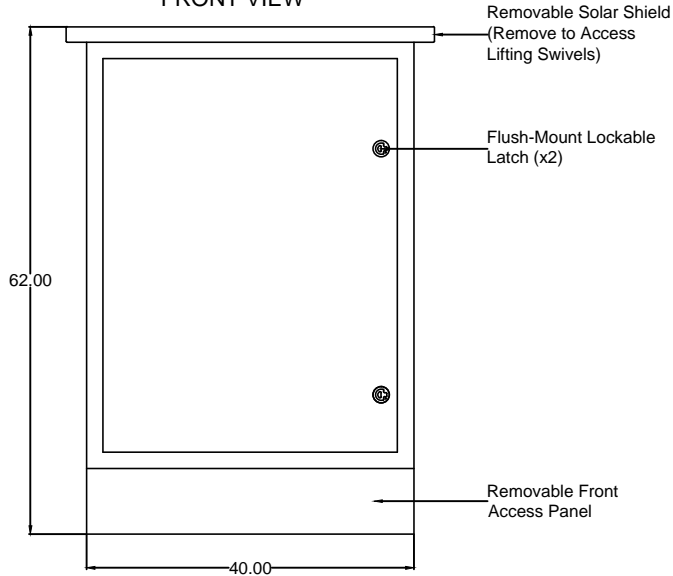
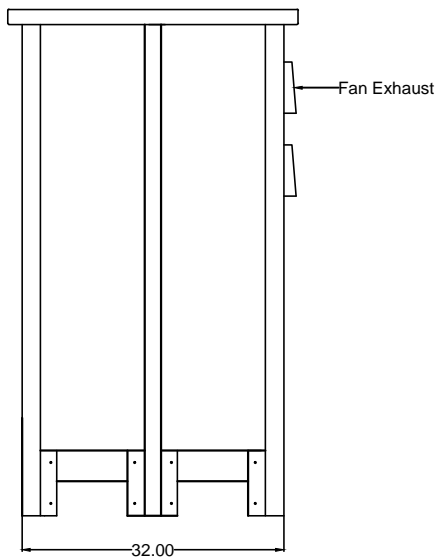


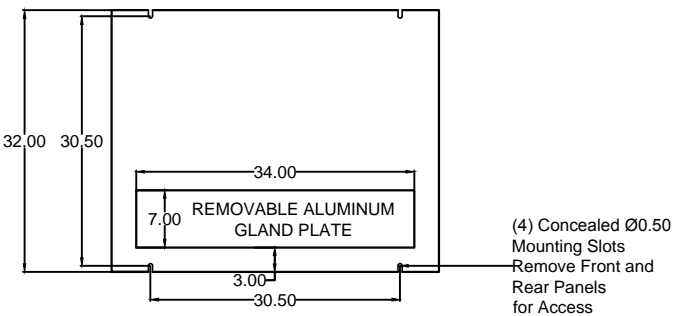
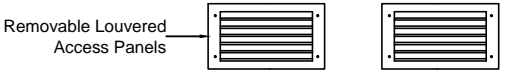
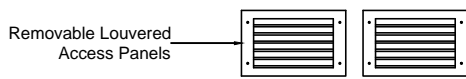
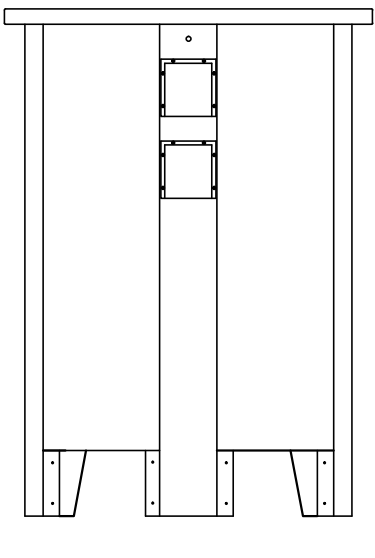
FRONT VIEW



SIDE VIEW



REAR VIEW



MOUNTING FOOTPRINT

Enclosure Type:	Type A - SD
Listing Agency:	Intertek-ETL
Designations:	75kVA 3-PHASE (TYPE A-SD)
kVA:	75
Primary:	480V
Secondary:	120/208V
Primary MCB Disconnect:	-
Frequency:	60 Hz
Sound Level:	30 dB Max.
BIL:	5kV+
Insulation Class:	F (155° C)
Leads:	Fine Stranded, Copper, Tin-Plated
Temperature Rise (80% Load):	60° C
Impedance:	2.2% - 3.5%

Terminations	Location	Terminals
Primary:	Front	(2) 350MCM / PHASE
Secondary:	Front	MCB or MLO

Estimated Weight:	855
Base Height:	12" (Requires No Extra Curbing)
Base Mounting Isolation:	45 Durometer .25" Thick Neoprene Rubber
Gland Plate Dimensions:	7" x 39"
Housing Material:	316L Stainless Steel (NEMA 3R)
Housing Coating:	White Powder Coat
Cooling:	Eight (8) Internal, Thermo-Statically Controlled Fans. Thermostat Closes at 140° F
Condensation Removal:	Photocell Controlled Fans
Lifting:	Engineered Swivels Concealed Under Removable Solar Shield. Tested to Exceed 3420 lbs. Capacity Minimum (4x Static Weight)
Forklift Access:	Front / Side

Wiring Connections:

PRIMARY: H1, H2, H3
SECONDARY: X0, X1, X2, X3 (X0 is Neutral)
 Wired to Main Circuit Breaker / Main Lug

MARINA ELECTRICAL EQUIPMENT, INC.
 100 WABSWICK COURT
 WILLIAMSBURG, VA 23185



TEL: 1-855-268-3939
 FAX: 757-268-9888
 WEB: www.marinaelectricequipment.com

GTX UNIT SUBSTATION
 75kVA 3-PHASE TYPE A-SD
 480V TO 120/208V

NO.	REVISION	DATE

DATE: 10/09/14

DRAWN: CLD CHECKED: KWT

SCALE: NTS

GTX UNIT
 SUBSTATION
 75kVA
 3-PHASE
 TYPE A-SD
 SHEET